

Quality ensured

Each **PLUSTEAM** steam sterilizer is manufactured according to the MDD 93/42/EEC & PED 97/23/EEC; technical standards EN 60601-1-2 (EMC), EN 60601-1 (LVD), EN 285 (Steam Sterilizers), EN ISO 17665-1 (Validation & Routine Control) and EN 13445 (Pressure Vessels, from -1 to -5). Quality of each product is documented through EN ISO 9001 (Quality Systems) and EN ISO 13485 (Quality Systems for Medical Devices) standards. Safety of device is ensured through electrical current leak protection, short circuit protection, emergency stop, locking doors under pressure, safety valve, not enabling to open 2 doors at the same time (for pass through models only), water level control in generator, safety system to prevent door closing in case of an obstacle and failure or error alarms (visual, audio & printed).

Wide selection of optional features & accessories

PLUSTEAM series are available in hinged and vertical sliding door formations. It is possible to add one of many options & accessories from which some are listed below to your steam sterilizer.

- Drain Cooling
- Ethernet Connection / GSM Connection
- Chart Recorder System
- Plinth, Side Panels & Wall Cover Frame
- Ethernet Connection
- Double Connection System (Hospital Steam + Generator)
- Computer Software
- Fixed Height Transport Trolley
- Height Adjustable Transport Trolley
- Loading Trolley with Shelves
- Shelf System with Rails
- STU Baskets
- Water Softener
- Silent Air Compressor
- RO System



Ability to Furnish Sterilizers with Wide Range of Accessories (Picture is for Left Aligned Model with Customized PVC Lexan Label)

PLUSTEAM SERIES STEAM STERILIZERS

Our models and their technical specifications

MODEL	ORDER NO.	DIMENSIONS (W x D x H)	CAPACITY (L)	CAPACITY (STU)	DOOR FORMATION
PLUSTEAM 1S	511001	400x 620 x 400 mm.	100	1	SINGLE MANUAL SLIDING DOOR
	511023	400 x 620 x 400 mm.	100	1	SINGLE AUTOMATIC SLIDING DOOR
	511027	400 x 620 x 400 mm.	100	1	SINGLE HINGED DOOR
	511012	400 x 640 x 400 mm.	102	1	DOUBLE MANUAL SLIDING DOORS
	511025	400 x 640 x 400 mm.	102	1	DOUBLE AUTOMATIC SLIDING DOORS
PLUSTEAM 1M	511038	400 x 640 x 400 mm.	102	1	DOUBLE HINGED DOORS
	511002	400 x 1020 x 400 mm.	163	1,5	SINGLE MANUAL SLIDING DOOR
	511024	400 x 1020 x 400 mm.	163	1,5	SINGLE AUTOMATIC SLIDING DOOR
	511028	400 x 1020 x 400 mm.	163	1,5	SINGLE HINGED DOOR
	511013	400 x 1040 x 400 mm.	166	1,5	DOUBLE MANUAL SLIDING DOORS
	511026	400 x 1040 x 400 mm.	166	1,5	DOUBLE AUTOMATIC SLIDING DOORS
PLUSTEAM 1L	511039	400 x 1040 x 400 mm.	166	1,5	DOUBLE HINGED DOORS
	511003	400x 820 x 500 mm.	205	1,5	SINGLE AUTOMATIC SLIDING DOOR
	511029	500 x 820 x 500 mm.	205	1,5	SINGLE HINGED DOOR
	511014	500 x 840 x 500 mm.	210	1,5	DOUBLE AUTOMATIC SLIDING DOORS
PLUSTEAM 1XL	511040	500 x 840 x 500 mm.	210	1,5	DOUBLE HINGED DOORS
	511004	500 x 1020 x 500 mm.	255	1,5	SINGLE AUTOMATIC SLIDING DOOR
	511030	500 x 1020 x 500 mm.	255	1,5	SINGLE HINGED DOOR
PLUSTEAM 2	511015	500 x 1040 x 500 mm.	260	1,5	DOUBLE AUTOMATIC SLIDING DOORS
	511041	500 x 1040 x 500 mm.	260	1,5	DOUBLE HINGED DOORS
	511005	500 x 1220 x 500 mm.	305	2	SINGLE AUTOMATIC SLIDING DOOR
	511031	500 x 1220 x 500 mm.	305	2	SINGLE HINGED DOOR
PLUSTEAM 4	511016	500 x 1240 x 500 mm.	310	2	DOUBLE AUTOMATIC SLIDING DOORS
	511042	500 x 1240 x 670 mm.	310	2	DOUBLE HINGED DOORS
	511006	500 x 690 x 670 mm.	368	4	SINGLE AUTOMATIC SLIDING DOOR
PLUSTEAM 6	511032	670 x 690 x 670 mm.	368	4	SINGLE HINGED DOOR
	511017	670 x 710 x 670 mm.	377	4	DOUBLE AUTOMATIC SLIDING DOORS
	511043	670 x 710 x 670 mm.	377	4	DOUBLE HINGED DOORS
	511007	670 x 1020 x 670 mm.	458	6	SINGLE AUTOMATIC SLIDING DOOR
PLUSTEAM 8	511033	670 x 1020 x 670 mm.	458	6	SINGLE HINGED DOOR
	511018	670 x 1040 x 670 mm.	467	6	DOUBLE AUTOMATIC SLIDING DOORS
	511044	670 x 1040 x 670 mm.	467	6	DOUBLE HINGED DOORS
PLUSTEAM 10	511008	670 x 1220 x 670 mm.	548	8	SINGLE AUTOMATIC SLIDING DOOR
	511034	670 x 1220 x 670 mm.	548	8	SINGLE HINGED DOOR
	511019	670 x 1240 x 670 mm.	557	8	DOUBLE AUTOMATIC SLIDING DOORS
	511045	670 x 1240 x 670 mm.	557	8	DOUBLE HINGED DOORS
PLUSTEAM 12	511009	670 x 1520 x 670 mm.	682	10	SINGLE AUTOMATIC SLIDING DOOR
	511035	670 x 1520 x 670 mm.	682	10	SINGLE HINGED DOOR
	511020	670 x 1520 x 670 mm.	691	10	DOUBLE AUTOMATIC SLIDING DOORS
	511046	670 x 1540 x 670 mm.	691	10	DOUBLE HINGED DOORS
PLUSTEAM 14	511010	670 x 1820 x 670 mm.	817	12	SINGLE AUTOMATIC SLIDING DOOR
	511036	670 x 1820 x 670 mm.	817	12	SINGLE HINGED DOOR
	511021	670 x 1840 x 670 mm.	826	12	DOUBLE AUTOMATIC SLIDING DOORS
	511047	670 x 1840 x 670 mm.	826	12	DOUBLE HINGED DOORS
PLUSTEAM 14	511011	670 x 2120 x 670 mm.	952	14	SINGLE AUTOMATIC SLIDING DOOR
	511037	670 x 2120 x 670 mm.	952	14	SINGLE HINGED DOOR
	511022	670 x 2140 x 670 mm.	961	14	DOUBLE AUTOMATIC SLIDING DOORS
	511048	670 x 2140 x 670 mm.	961	14	DOUBLE HINGED DOORS

* Decimal chamber volumes are rounded up to next integer value.

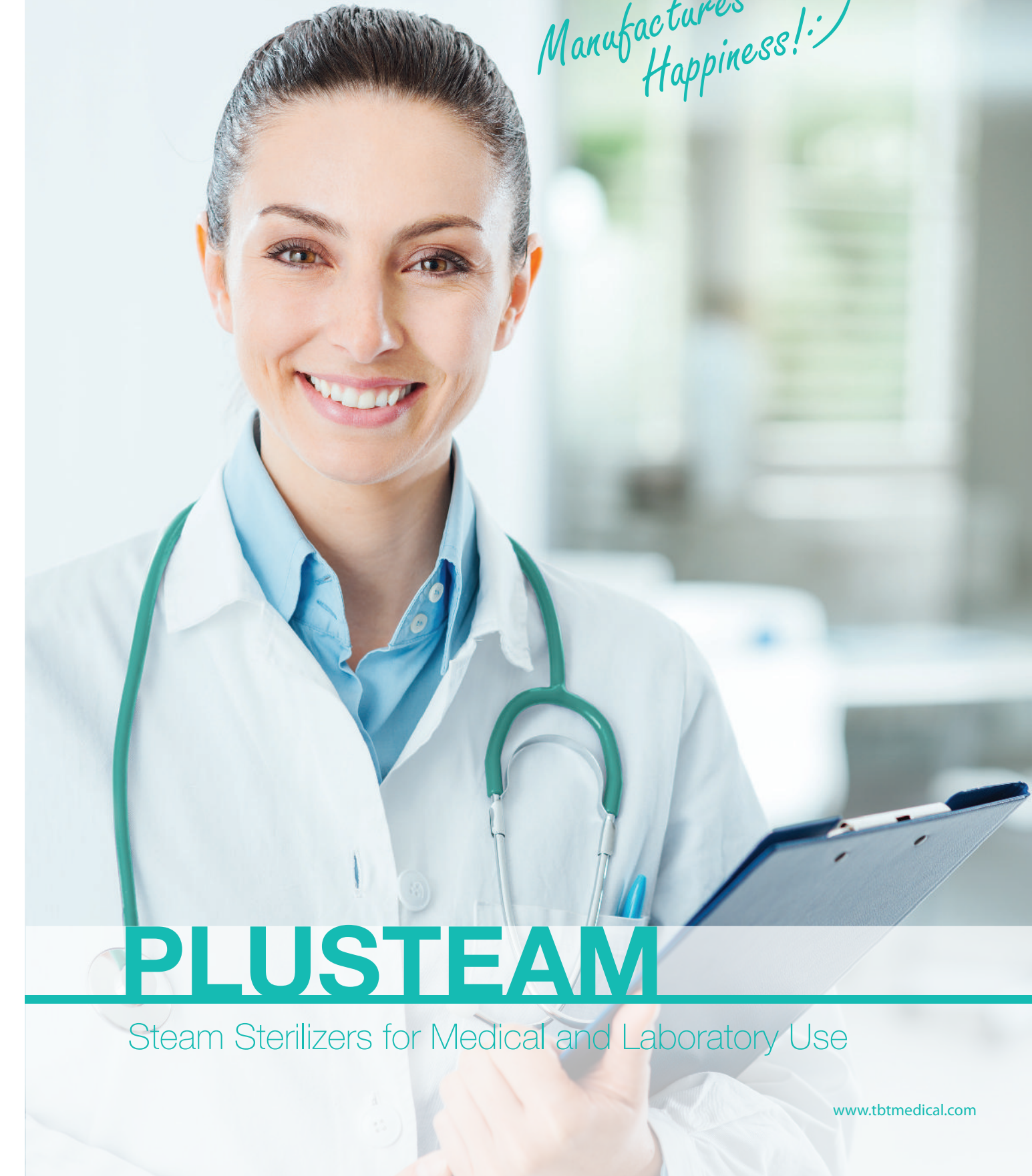


TURKUAZ BIYOMEDİKAL TEKNOLOJİLER VE SAĞLIK HİZMETLERİ SAN. TİC. LTD. ŞTİ.
İkitelli Org. San. Sitesi İsteks San. Sitesi D1 Blok No:10 İkitelli - Başakşehir / İstanbul
Tel: +90 212 320 37 53 Fax: +90 212 320 53 51 info@btmedical.com - www.btmedical.com

This document is intended for the use of partners of TURKUAZ BIYOMEDİKAL TEKNOLOJİLER VE SAĞLIK HİZMETLERİ SAN. TİC. LTD. ŞTİ. reproduction in whole or in part by any other party is prohibited. TBT specifications are given for reference only and are subject to change without any previous notice. Accessory/Product images are for illustrative purposes only. rev. EN 00002-2015 © 2015, TBT Inc. All rights reserved.



Manufactures Happiness! :-)



PLUSTEAM

Steam Sterilizers for Medical and Laboratory Use

+ Robust design for continuous workflow

PLUSTEAM series steam sterilizers are designed to combine stability with operational functionality. Hospitals and laboratories are open systems with complex functions where things may go wrong. A trouble-free steam sterilizer is essential to run C.S.S.D (Central Sterile Supply Depot) or laboratory without any problems. Proper sterilization keeps hospital's key operations and facilities, like operation theatre, running. In that manner, PLUSTEAM series are designed with the conscious that 100% success ratio robustness is not a luxury but an obligation.

Optimal & STU compatible design of PLUSTEAM series steam sterilizers makes them your partner in daily workflow. We keep in mind your needs for a fast, robust and user friendly sterilizer while combining it with service engineers' needs for simple & smooth design and administrative unit's all time efforts for getting all these features within an affordable budget.



Electro Polished Chamber

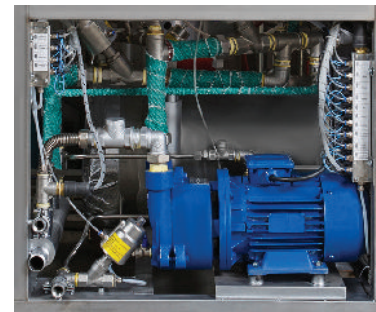
+ Enhanced control system for flexibility

All PLUSTEAM models are equipped with user friendly software. Software enables sterilization of textile material, surgical tools, rubber material, silicone implants and liquids in a glass container. Temperature can be set depending on the materials between 105°C to 134°C (values are recommended and actual temperatures can be set up to 141°C). Programs can be controlled with user friendly software which has 7 standard programs, 2 test programs (Bowie & Dick Test and Leak Test) and various optional programs which are available upon request. There is also space of free programs for user which may be used to optimize their process flow.

In order to ensure energy savings PLUSTEAM devices have stand-by and sleep modes. Auto warm-up function available enables time savings in addition to this. It is possible to calculate F₀ value as an option.



Integrated Steam Generator with Water Supply Pump



Liquid Ring Vacuum Pump for Fast and Energy Saving Cycles

+ Quality with complete set of components

PLUSTEAM series of steam sterilizers are delivered as a complete unit as described below, unless it is requested otherwise:

- Chamber with Surrounding Jacket for Stability
- Integrated Steam Generator
- Vacuum Pump
- Water Pump for Supplying Generator
- Electrical Control Panel
- Valve Group
- H14 Hepa Filter
- Thermal Printer
- 7" Color TFT LCD Touch Screen

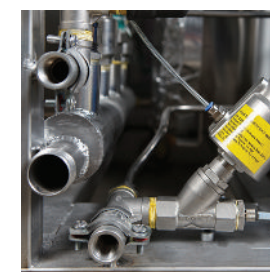
Chamber, jacket, steam generator and door(s) are made of high quality AISI 316 L / AISI 304 stainless steel while surrounding panels and frame are made of AISI 304 quality stainless steel. Piping and valves are also made of stainless steel in order to increase life time of sterilizer. Chamber, jacket and door(s) are insulated with CFC free glass wool while all active pipes have thermal insulation in order to reduce energy loss, making PLUSTEAM eco-friendly.



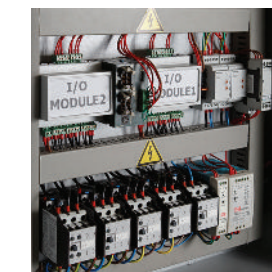
Electric Panel Cover with Electrostatic Painting for Safety



Precise Service with Descent Monitoring at Service Area



Drain System with Ability to Align Any Side Depending on Site Conditions



Electric Panel, Designed for Robustness



AISI 304 Stainless Steel Piping with Heat Insulation



Manometers at Service Area (Standard) or on Panel(s) (Optional)



Thermal Printer for Recording and Locking System for Safety



Steam Generator Made of AISI 316 L Stainless Steel



H14 HEPA Filter



Possibility to Continue Cycle in case of a Power Failure

7" color TFT LCD touch screen panel based on user friendly microprocessor controlled PLC controller on clean side provides features like:

- Cycle Log and Error Log
- Display of Pressure and Temperature in Chamber, Jacket, Generator and Gasket (Also Available with Manual Gauges on Side for Service Purposes)
- Multilanguage Selection
- Password Protection
- Program Optimization
- Service Menu
- Alerts and Self Diagnostic Features
- Safety Features for Operator and Sterilization Cycle

7" Color TFT LCD touch screen is standard for pass through models in sterile side with limited functions, in order to enable monitoring and control from both clean and sterile areas.

PLUSTEAM series may be integrated to an already existing system or may be connected to a computer through USB port. Microcomputer controlled PLC controller unit combined with screen includes RS 232, RS 485, USB and Ethernet ports already installed on device.



Single or Double Door Formations